

Tenaja Mesa Ranch

Catron County, New Mexico



Various size ranches at \$1,050 per acre



Wide variety of terrain offers diversity at Tenaja Mesa Ranch

Located in the rugged ranch country of Western New Mexico, Tenaja Mesa Ranch is a secluded hideaway offering a variety of terrain ranging from wide-open prairie, spectacular plateaus and rugged mesas. Rich foilage includes pinon trees, small evergreens and towering pines.

Upon entering the ranch, long, winding roads lead the way up and down the hilly countryside. Huge blue skies extend endlessly across the wide horizon. At night, the stars sparkle and flicker, tiny lamps illuminating the jet black sky.

This is the Tenaja Mesa Ranch. It is here where you can imagine the Old West as it once was, untouched and unexplored, a southwestern haven perfect for a homesite, or just a place to escape the pressures of everyday life.

Hunt, explore, relax.

Welcome to Tenaja Mesa Ranch.



Tenaja Mesa Ranches

Frozen winter lakes create a shimmering foreground for ranch plateaus...



...while wide open valleys and rolling hills pepper the landscape on the opposite end of the ranch.



Numerous mesas and plateaus across the ranch create an impressive horizon.



Tenaja Mesa Ranches

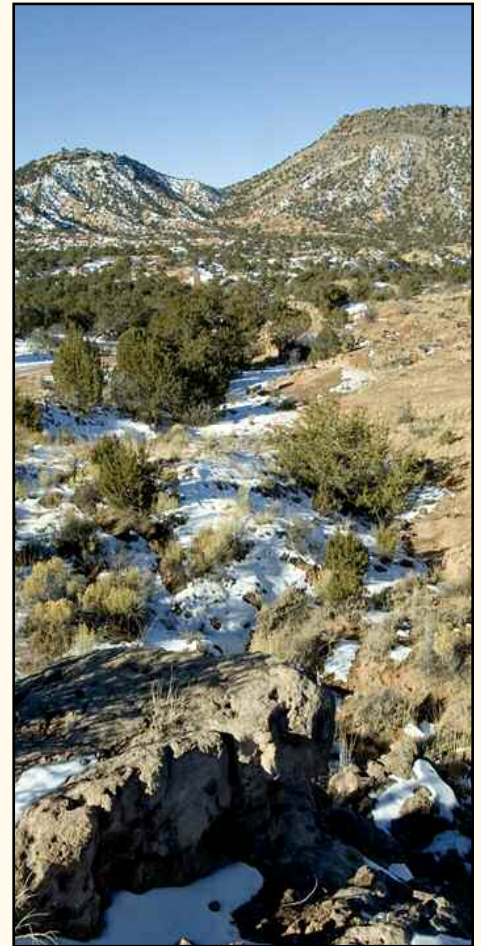
Nestled across the northern border of Catron County along Hwy. 60, the cozy ranching town of Quemado and its 250 residents enjoy an uncomplicated life. In an area where the elk outnumber the people, hunting, fishing, hiking and camping abound.

Ranching is still the primary occupation in this region of New Mexico, but real estate development is gaining momentum as the rugged beauty of this country is slowly being discovered. Quemado was founded as a farming and ranching settlement.

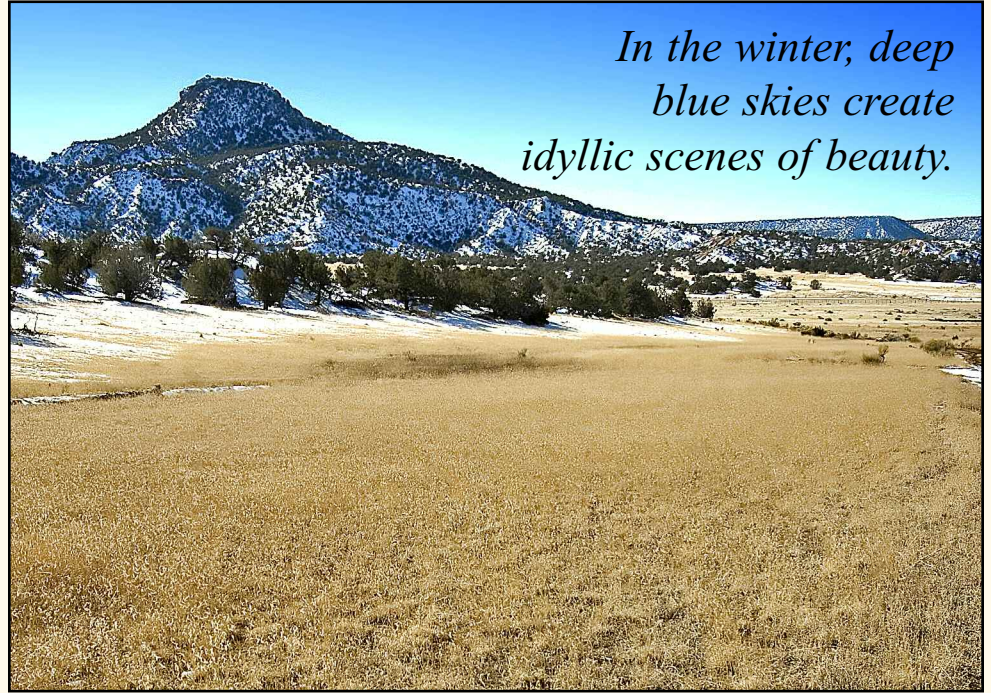
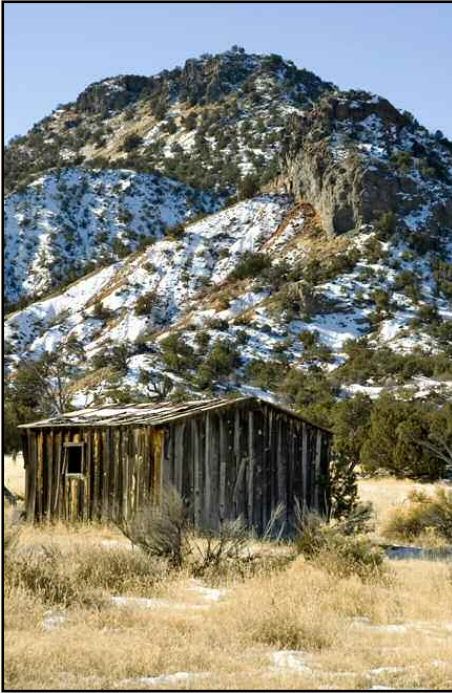
QUEMADO

Early pioneers to the region discovered a little river on which the banks had been burned, and they named it “Rito Quemado,” which means “burned land” in Spanish. The settlement that grew around that area adopted the name.

Fourteen miles south of the town is Quemado Lake. It provides wonderful camping, hiking and trout fishing opportunities. An unusual aspect of the area is a large-scale work of art by sculptor Walter De Maria. It is comprised of some 400 polished stainless steel rods of over 20 feet in height inserted into a grid that measures one mile by one kilometer. Known as the “Lightning Field,” arrangements can be made to spend the night inside the sculpture area. It is said that the “Lightning Field” puts on quite a show at night.



Tenaja Mesa Ranches



In the winter, deep blue skies create idyllic scenes of beauty.



Tenaja Mesa Ranches

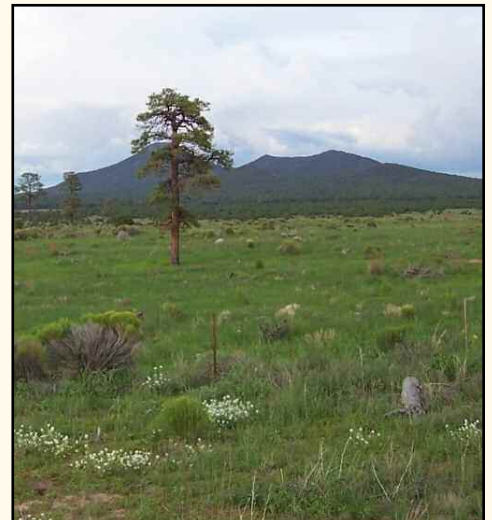
Secluded and remote, the ranch offers solitude, privacy and peacefulness. Known for its stark beauty, the Western region of New Mexico offers a deep history and a rugged charm unique to the area.

About an hour east of Quemado lies

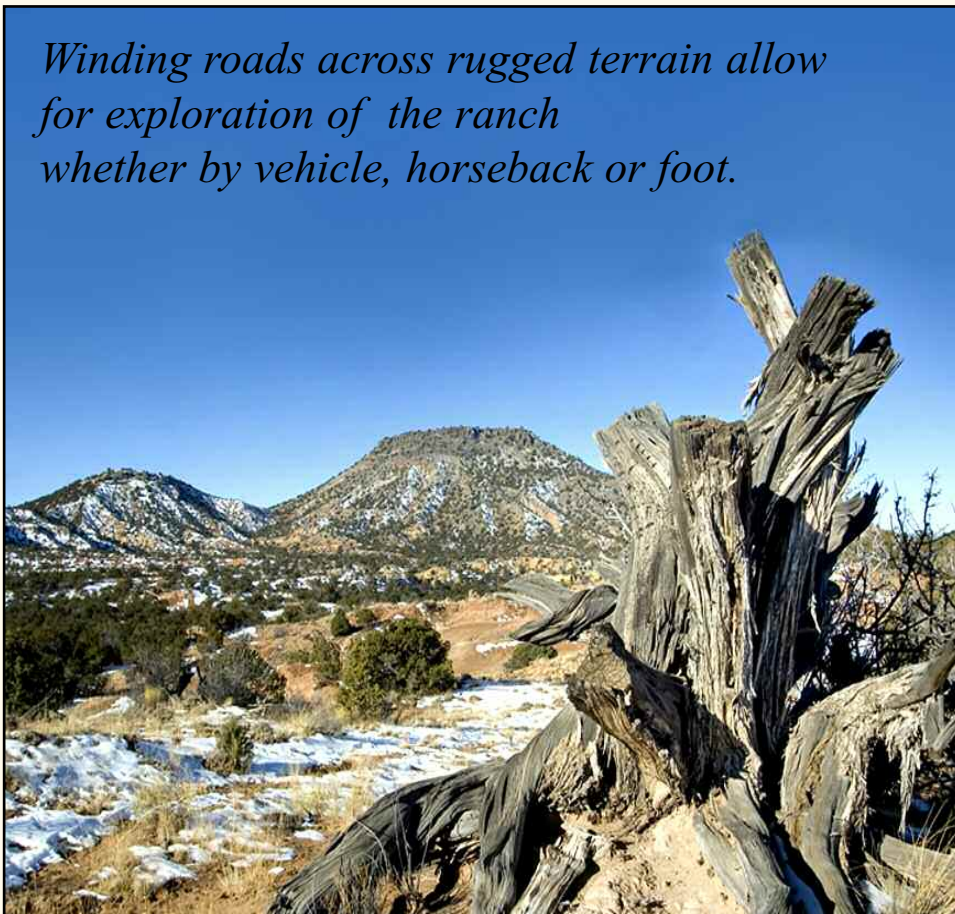
Pie Town. Originally called Norman's

PIE TOWN

Place, it was changed to Pie Town because the town's gas station owner began selling pies to passing automobile travelers on U.S. Hwy 60 in the 1920s. Every September Pie Town holds its annual "Pie Festival", a community event featuring pie-eating contests, a western style BBQ, a bean dinner, music, local artisans and more. A book by Joan Myers entitled *Pie Town Woman* provides a deeper look into the city's history during troubled times.



Winding roads across rugged terrain allow for exploration of the ranch whether by vehicle, horseback or foot.



Tenaja Mesa Ranches

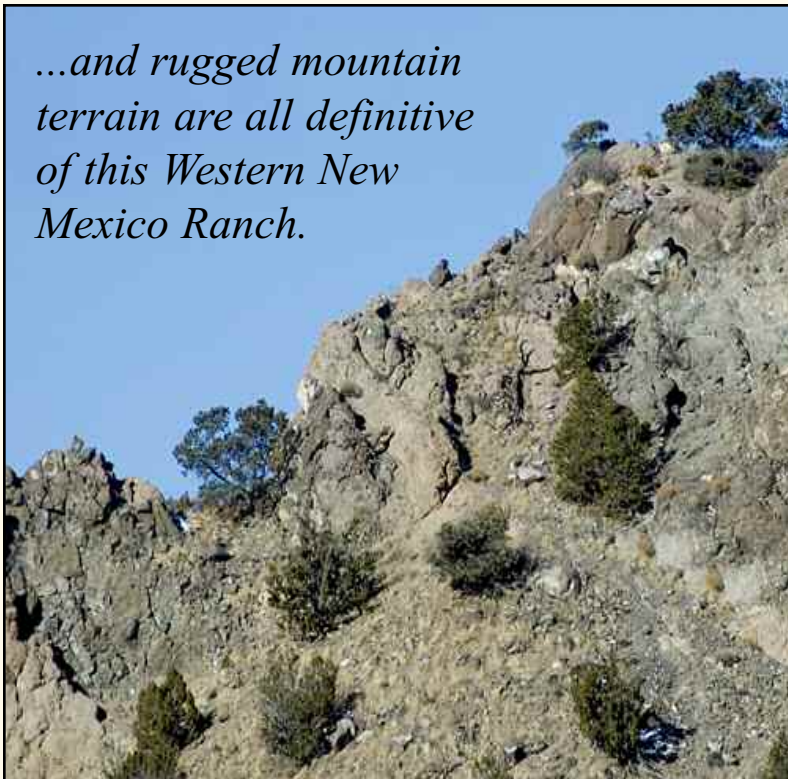
Straight roads through open prairie...



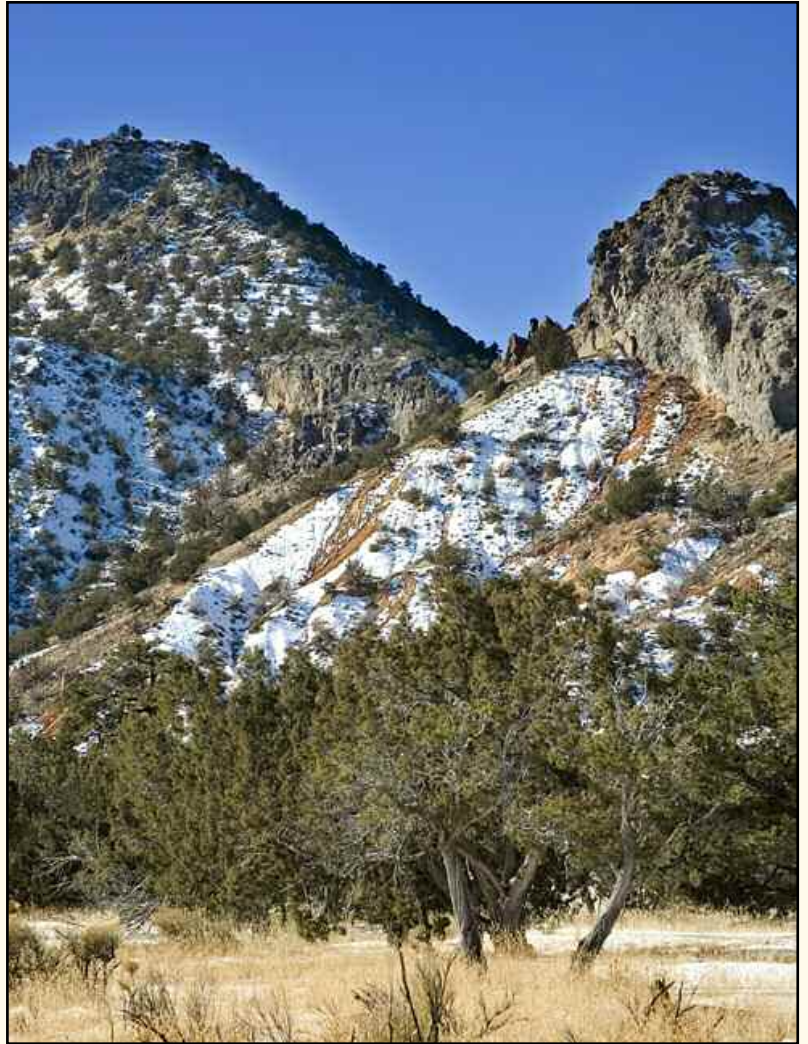
...winding roads leading to mountain peaks...



...and rugged mountain terrain are all definitive of this Western New Mexico Ranch.



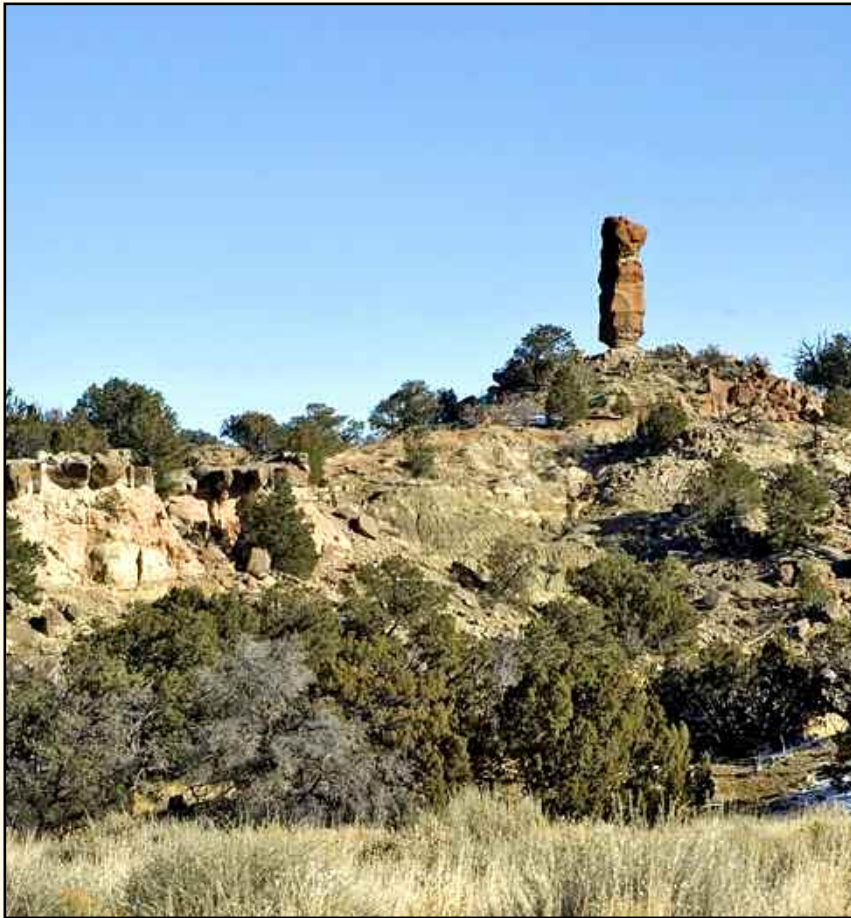
Tenaja Mesa Ranches



Tenaja Mesa Ranches



Tenaja Mesa Ranches



Unique rock formations, unusual configurations of a remarkable terrain and peculiar topography make this ranch one of a kind.



Tenaja Mesa Ranches



This ranch is perfect for a secluded homesite situated in the heart of New Mexico's rugged western ranchland. Don't delay!



Tenaja Mesa Ranches

WORLD RENOWNED ELK REGION

This region of New Mexico has earned a reputation for an abundance of elk, mule deer, antelope, mountain lions, bears and bobcats.



The region is also famous for archeological sites. Pictured are some of the ruins and a petroglyph.



Tenaja Mesa Ranches

AIRPORTS

Air travel to East Mesa Ranch



Grants-Milan Municipal Airport

Owned by the Town of Grants, this conveniently located airport has more than one runway, with the longest paved runway extending 5300 feet. This facility is at an elevation of 6520 feet, and it is only 85 miles North of Quemado.

www.airnav.com/airport/KGNT

Town of Springerville Municipal Airport

For those arriving via private or chartered aircraft, the jet-capable Springerville Airport is located just 45 miles from Quemado. With a 8,420 foot paved runway, this airport is ready to meet your aviation needs.

<http://www.airnav.com/airport/D68>



Tenaja Mesa Ranches



East of Quemado on Hwy 60, NASA's Very Large Array (or VLA) forms an impressive line of 27 independent radio antennae, each weighing in at 230 tons.

It is here that scientists listen to the stars and make radio maps of the heavens.

The VLA was commissioned in 1972. Guided tours are available.

The VLA and the Movie Industry

The VLA is the setting of the beginning of Arthur C. Clarke's novel/film 2010: Odyssey Two. It was also featured prominently in Carl Sagan's science documentary Cosmos and 1985 novel/film Contact, albeit expanded to 131 dishes and renamed the "Argus Array." When the time came for Hollywood to make the motion picture version (Contact, 1997), much of the outdoor footage was shot at the VLA site. In the 1996 film Independence Day the alien invaders were initially detected by SETI at the VLA.



Tenaja Mesa Ranches

SUNRISE PARK RESORT

Whether you're looking to ski, mountain bike, fish or enjoy annual festivals, you can enjoy year-round excitement at the Sunrise Park Resort located in the heart of Arizona's magnificent White Mountains.

With 65 runs, a separate snowboarding area, cross country ski trails and a special children's "ski-wee" area, there is adventure to be had for people of any level. Dare devils won't want to miss the TerrainPark's half pipe, implanted wood and metal rails and jumps.

The Sunrise Park Lodge is located near beautiful Sunrise Lake and is available for comfortable lodging in the winter and summer seasons. The 100-room hotel offers great dining, indoor pool and whirlpool, lounge and game room. In summer, a marina is open for boat rentals

Sunrise Park Resort is located just 69 miles from Quemado, NM. More information is available at <http://www.sunriseskipark.com/>



SKY CITY CASINO



Blackjack, craps, roulette, high-stakes bingo, and 790 slots are just the beginning here. Dine at the Huwaka Restaurant, or enjoy quick refreshments and Starbucks coffee at the snack bar. The Sky City Hotel and Convention Center offers 133 rooms, conference and meeting facilities, and a 1,200-seat lounge featuring live entertainment. At the Sky City Travel Center, you can stock up on gas and food.

The casino is located 92 miles NE of Quemado. You can find more information at www.skycitycasino.com

QUEMADO LAKE

The 800-acre Quemado Lake Recreation Area is located approximately 20 miles south of Quemado. The recreation area includes the



131 acre man-made trout lake with two ADA fishing piers, two boat ramps, seven developed campgrounds, one primitive campground, and links to more than seven miles of hiking trails.

The lake is nestled between piñon-juniper woodlands and pine forests at an elevation of 7,860 feet.



Tenaja Mesa Ranches



EL MALPAIS NATIONAL MONUMENT

This spectacular lava bed is located only 30 miles or so north of Quemado. These volcanoes have long been dormant, some for more than 800 years. The lava flow covers an area 35 by 60 miles. Admission to this natural wonder is free, and the road leading into the monument twists some 30 miles into the dark lava flow. Several cinder cones and craters can be found in this region. Caves here are sometimes filled by ice all year long. Hikes can be taken along the rim of an 800-foot extinct volcano. There is also an ice-cave museum. This is one of New Mexico's exquisite natural wonders.



Tenaja Mesa Ranches

COYOTE DEL MALPAIS GOLF COURSE

New Mexico boasts many notable public courses, but none match the unique character and backdrop of Coyote del Malpais. Tucked beneath the dramatic grandeur of 11,300-foot Mount Taylor, the Coyote features 18 holes for up to 7,000 feet of wide-open, challenging driving. If you wish, tame the Coyote with one of the four tee distances at every hole. Sixteen lakes add cool elegance to this championship course, but also add a thrilling challenge for those driving from the pro tees.

In addition to incredible grooming and expert design on the greens and fairways, Coyote del Malpais ensures your satisfaction with a fully equipped pro shop, refreshing foods and beverages, and the trademark hospitality you won't soon forget. You'll even appreciate the snap of the carts to set your own pace on the best 7,000 yards you can play in the Land of Enchantment. \$26/person for 18 holes with a cart!

Located 85 miles North of Quemado.



WENIMA WILDLIFE AREA

Wenima Village is located in a heavenly valley in Eastern Arizona, adjoining the town of Springerville. The word "Wenima," from the Hopi and Zuni Native American language means, "Coming Home."

The site is approximately three hundred acres (plus or minus) and has the Little Colorado River running next to it. These waters are fed from the springs on Mt. Baldy, a sacred mountain to Native American Apaches.

Wenima Village is 30 minutes from Sunrise Recreational Ski Area, Greer and the hiking and biking trails of Mt. Baldy. The Painted Desert, Canyon de Chelly National Monument, Monument Valley and the El Morro National Monument are all within a two-hour drive. The Springerville Airport features an 8,400 foot runway about ten minutes from the site for those who want to fly in for a visit.

Wenima Wildlife Area is located 54 miles west of Quemado, NM. You can discover more about this area at www.wenima.com/New_pages/land.html



CORONADO TRAIL TOUR

The Coronado Trail Driving Tour in Arizona is a 194 mile paved highway that retraces Francisco Vásquez de Coronado's epic journey in 1540 and provides one of the greatest driving adventures in the West. With wonderful panoramas and beautiful alpine country along the way, many back roads, camping areas, hiking trails, mountain streams, and lakes lie near the drive, which is equally scenic in both directions. Study more about this trail at www.byways.org/explore/byways/2059/



Tenaja Mesa Ranches



New Mexico's largest lake adds recreational flavor to Western New Mexico

Nestled on the shores of New Mexico's largest lake the City of Elephant Butte was named for the resemblance of an extinct volcanic cinder cone, located right behind the dam. The lake is only 193 miles from Quemado.

The New City of Elephant Butte offers the traveler great motels, restaurants, churches, service stations, bait shops, banks, auto/boat sales, repair shops, and more.

Located along the Geronimo Byway, the City is a hub for day trips to local historical sites and the Gila National Forest.

This clean and quiet community is a great place to get away from it all for a day or a lifetime. The climate is ideal for year-round outdoor activities and special events.

Fishing is one of the most popular sports at the lake. Elephant Butte is known for black, white and striped bass,

channel catfish, crappie, bluegill and walleye.

Camping is available through the State Park Reservation Service, which offers 200 camping and picnicking areas, 100 fully developed RV stations, and areas for large groups.

Bird Watching is abundant at Elephant Butte Lake. Considered to be one of the best birding areas in the state of New Mexico, Elephant Butte has a diverse bird habi-

tat with rare species such as the American Bald Eagle.

Boat rentals, repairs and sales are available in the City of Elephant Butte. Additional rentals and launch sites for boats are at the marinas. Watersports include waterskiing, windsurfing, sailing, jet-skiing, rafting and more.

The City of Elephant Butte offers several conference facilities available for conventions, retreats, banquets, weddings and reunions.



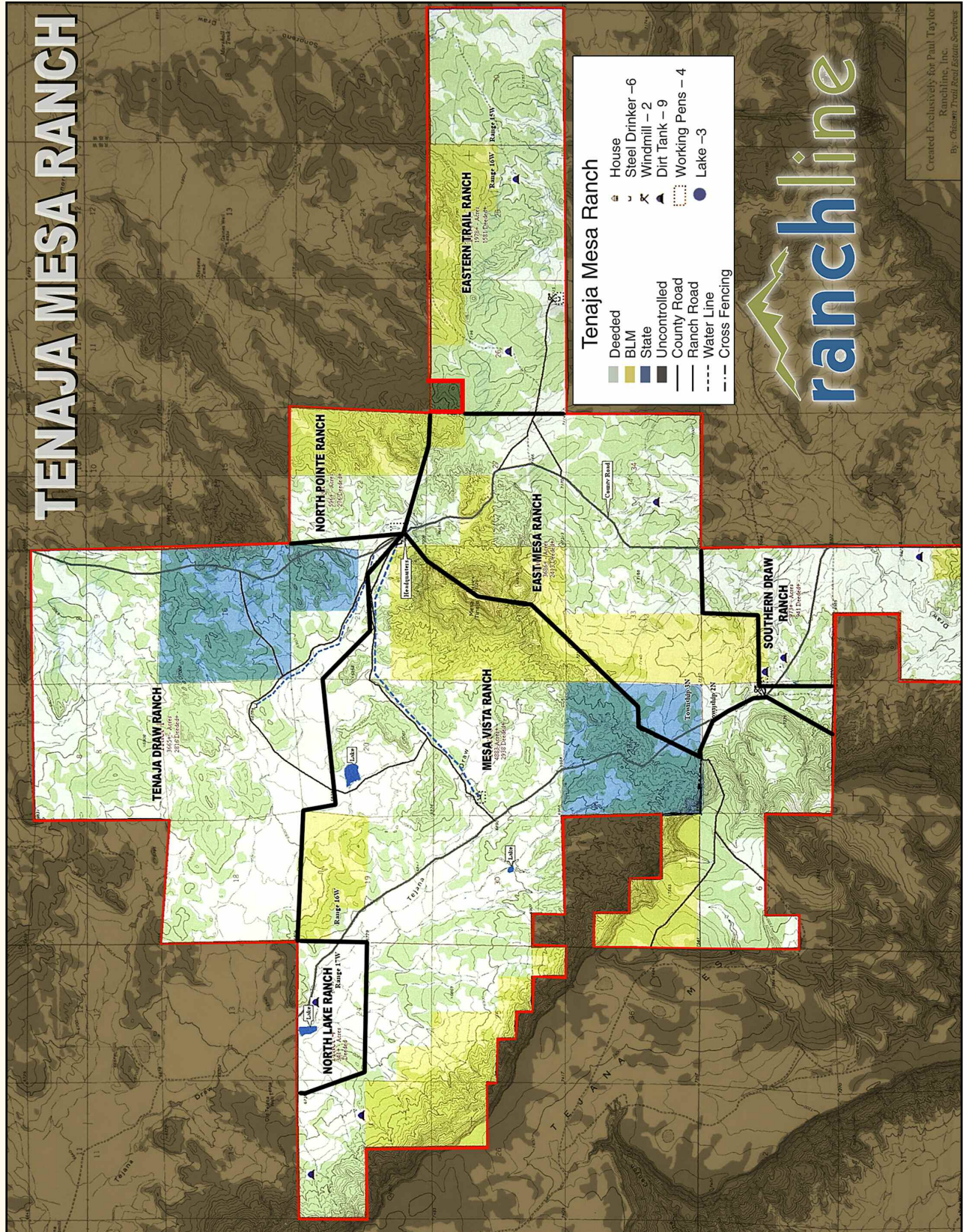
Sierra del Rio Golf Course

Scheduled to open in early summer, 2007

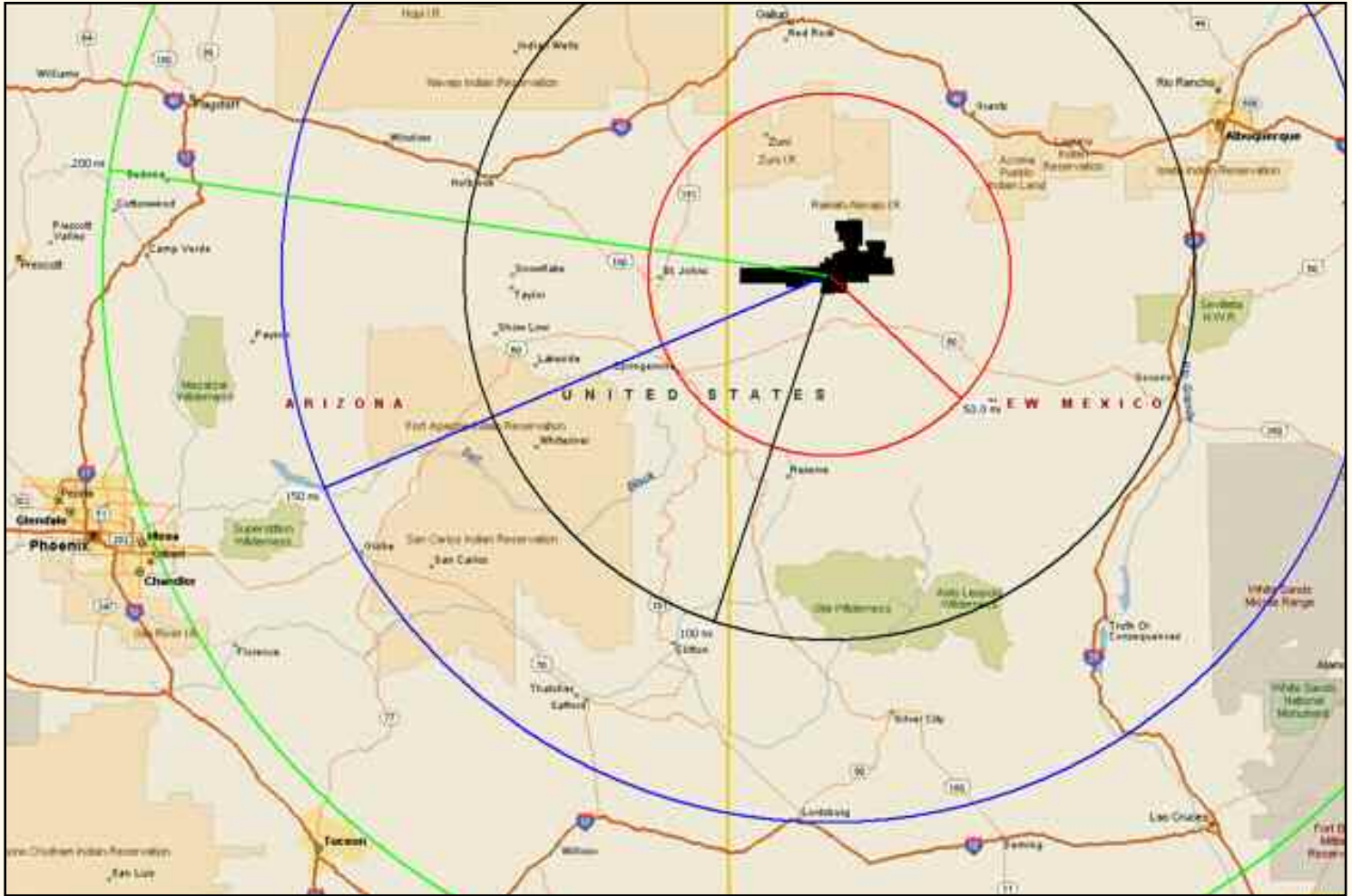
Snuggled just six miles from the base of Turtleback Mountain and sprawling throughout the wide open landscapes of the high desert, Sierra del Rio honors the majestic spirit of the wild southwest. **Located in Elephant Butte, NM** within the 1000 plus acres of Turtleback Mountain Resort, Sierra Del Rio Golf Course, is an 18-hole championship daily fee facility with full amenity clubhouse. Unique. Natural. Unforgettable. See www.sierradelrio.com



Tenaja Mesa Ranches



Tenaja Mesa Ranches



Distance from Quemado to:

Albuquerque198 miles
Santa Fe259 miles
Las Cruces269 miles
Silver City141 miles
Gallup141 miles

Socorro121 miles
Springerville, Arizona .32 miles
Tuscon, Arizona259 miles
Phoenix, Arizona253 miles
Flagstaff, Arizona ...215 miles

Tenaja Mesa Ranches

