

# *the Buckhorn Ranch*



  
ranchline

**Majestic views...**

**Rolling hills...**

**Vast meadows...**

**are all part of the beautiful landscape of the Buckhorn Ranch. Located just 26 miles west of Hope, New Mexico, the Buckhorn is a perfect display of nature's beauty. The rolling hills of the ranch provide the perfect habitat for wildlife, while the meadows set the stage for a successful, year-round cattle operation.**



Native grasses

include:

Blue grama

Black grama

Side Oats

Mountain Muhly

Winter fat



Tree cover is  
predominantly:

Pinon

Juniper

Cedar



# CATTLE

**Sprawling across the New Mexico plain, the Buckhorn Ranch is approximately 4,640 acres (1,600 deeded and 3,040 BLM MOL) encompassing a variety of terrain from flat plains to deep canyons and plateaus. This ranch has a little bit of everything. Famous for its grassy prairies, blue skies and wide horizons, this ranch offers good working facilities and easy access.**

**Centrally located in New Mexico, this ranch property has potential in a number of areas, making it attractive to ranchers or individuals seeking a solid investment opportunity.**

**The Buckhorn Ranch is ideal for a year-round cattle grazing operation. The ranch has a carrying capacity of 131 animal units (cow/calf).**





# WILDLIFE

**Abundant wildlife roams throughout the vast land of the Buckhorn Ranch. The sportsman can enjoy deer, dove, quail, mountain lion, some elk, turkey, barbary sheep, bobcat, and coyote.**

**Good brush coverage and trees, in addition to an abundant water supply throughout the ranch, provide the perfect place for wildlife to thrive. Mountainous areas produce good coverage and the native grasses are an attractive food supply for the animals.**





*The peace and tranquility of beautiful  
New Mexico skies are visible and can  
be experienced throughout the ranch...*





*Famous for its wide open spaces,  
the Buckhorn Ranch is a  
display of nature's beauty*





















# Wind Energy Production POTENTIAL

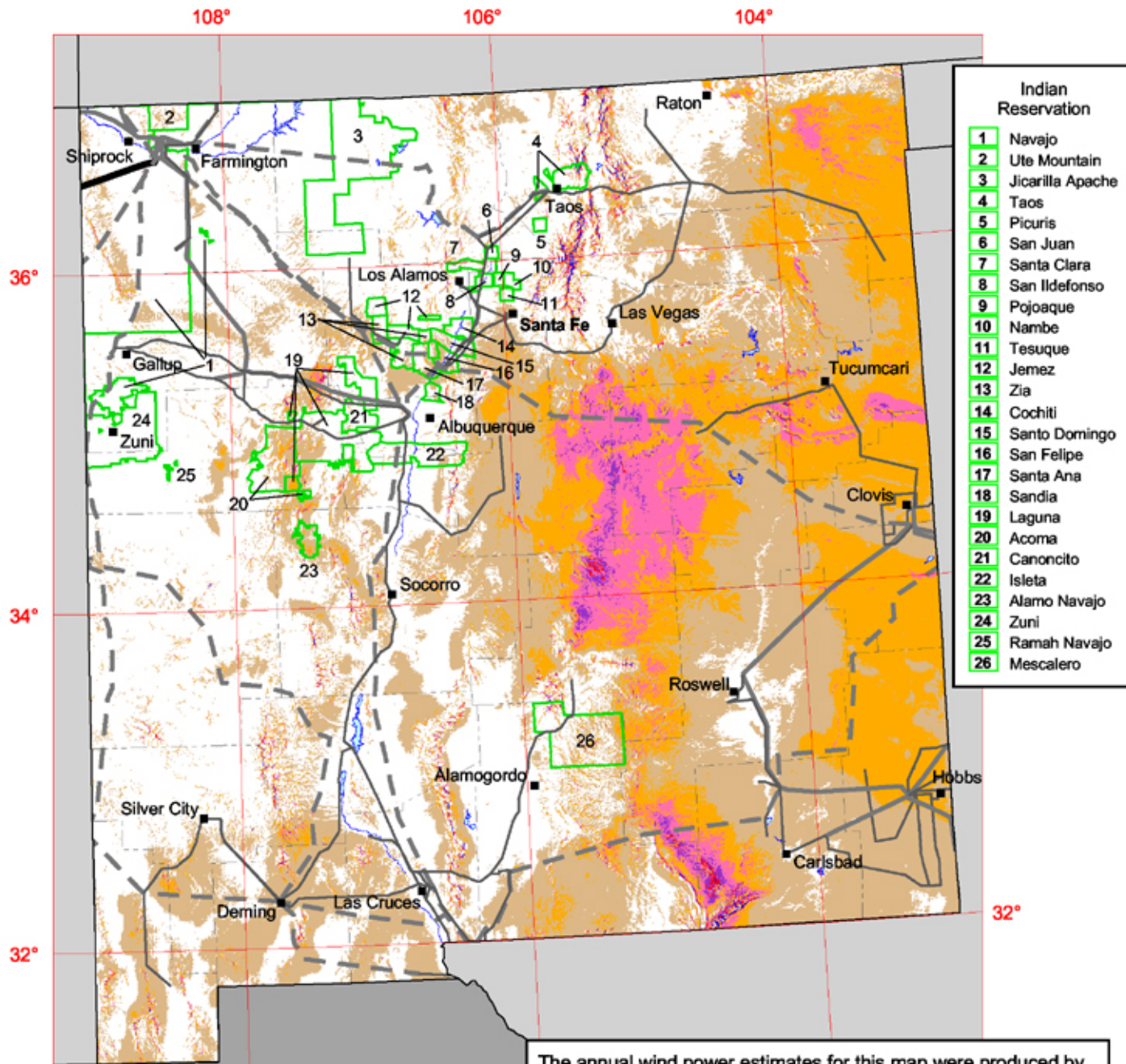
Wind farms are appearing all over the southwestern United States. It is not uncommon to see these structures as you are driving down the Interstate. The U. S. Department of Energy has rated the area of the ranch as good to excellent for wind energy production.

Energy prices, supply uncertainties, and environmental concerns are driving the United States to rethink its energy mix and develop diverse sources of clean, renewable energy. The nation is working toward generating more energy from domestic resources—energy that can be cost-effective, and replaced or “renewed” without contributing to climate change or major adverse environmental impacts.

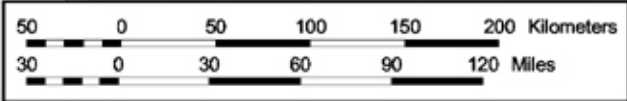
**U. S. Department of Energy experts project wind energy will provide 20% of U. S. electricity needs by the year 2030.**



# New Mexico - Wind Resource at 50 m



- Indian Reservation**
- 1 Navajo
  - 2 Ute Mountain
  - 3 Jicarilla Apache
  - 4 Taos
  - 5 Picuris
  - 6 San Juan
  - 7 Santa Clara
  - 8 San Ildefonso
  - 9 Pojoaque
  - 10 Nambé
  - 11 Tesuque
  - 12 Jemez
  - 13 Zia
  - 14 Cochiti
  - 15 Santo Domingo
  - 16 San Felipe
  - 17 Santa Ana
  - 18 Sandia
  - 19 Laguna
  - 20 Acoma
  - 21 Canoncito
  - 22 Isleta
  - 23 Alamo Navajo
  - 24 Zuni
  - 25 Ramah Navajo
  - 26 Mescalero



The annual wind power estimates for this map were produced by TrueWind Solutions using their Mesomap system and historical weather data. It has been validated with available surface data by NREL and wind energy meteorological consultants.

Wind Power Classification				
Wind Power Class	Resource Potential	Wind Power Density at 50 m W/m <sup>2</sup>	Wind Speed <sup>a</sup> at 50 m m/s	Wind Speed <sup>a</sup> at 50 m mph
1	Poor	0 - 200	0.0 - 5.6	0.0 - 12.5
2	Marginal	200 - 300	5.6 - 6.4	12.5 - 14.3
3	Fair	300 - 400	6.4 - 7.0	14.3 - 15.7
4	Good	400 - 500	7.0 - 7.5	15.7 - 16.8
5	Excellent	500 - 600	7.5 - 8.0	16.8 - 17.9
6	Outstanding	600 - 800	8.0 - 8.8	17.9 - 19.7
7	Superb	> 800	> 8.8	> 19.7

<sup>a</sup> Wind speeds are based on a Weibull k value of 2.0

Transmission Line*	
Voltage (kV)	
—	115 - 138
—	230
—	345
—	500

\* Source: POWERmap, ©2002 Platts, a Division of the McGraw-Hill Companies



# Cloudcroft, New Mexico

Cloudcroft, New Mexico, is a unique mountain community which combines the amenities of modern life with their heritage as a pioneer village. Cloudcroft is the travel destination of thousands of visitors each year. In the summer, it is a wonderful place to get away from the heat and enjoy the delightful pleasures of the mountains. In the winter, you can explore the vast wonderland of cross-country skiing, snow mobiling, and ice skating. At any time of the year, Cloudcroft is truly "The Most Enchanting Part of the Land of Enchantment!"

Cloudcroft, New Mexico is....

- 40 miles from casino wagering and golf at the Inn of the Mountain Gods.
- 50 miles from Ruidoso Downs.
- 16 miles from the Space Museum, Alameda Park Zoo, and Toy Train Depot in Alamogordo.
- 40 miles from White Sands National Monument.
- 150 miles from Carlsbad Caverns.
- 90 miles from El Paso and the Mexican border.
- Within 50 miles of 8 magnificent golf courses.

One hundred years ago, the railroad was completed between Alamogordo, New Mexico and El Paso, Texas. The railroad's owners were intrigued by the majestic mountains to the East of Alamogordo and soon sent a survey party to the summit. They discovered untouched wilderness -- a wonderland of wildlife, plants, and trees. They were also impressed with the way the clouds blanketed the ground because at 9,000 feet above sea-level, Cloudcroft was literally in the clouds. The name Cloudcroft is a term related to an English description of a clearing covered in clouds.

Soon after, an excursion train was established to the top of the mountain and the village of Cloudcroft was born.

For the first half of Cloudcroft's existence, the train was the only means of travel to the village (except possibly by pack mule). In

the mid-1940s, the first highway to the village was opened -- taking away much of the train's logging and excursion business. The train discontinued service to the village in 1948.



Although it has been over a half century since the train chugged into the sleepy mountain village, the spirit of the old railroad still prevails, with signs of it obvious in many places.

Today, Cloudcroft has all the amenities of modern living while still hanging on to its heritage of rugged pioneer life. It is the destination of thousands of visitors each year. In the summer, it is a wonderful place to get away from the heat of the lower elevations (Cloudcroft is an average of 20 degrees cooler than Alamogordo, sixteen miles and 6,000 feet lower.) The village area features summer pastimes such as horseback riding, fishing, golf (the Lodge Golf Course is the highest in North America), camping, hiking, biking, hunting, and, of course, shopping. Cloudcroft is the home of many of America's most accomplished artists in many different disciplines. Their original works are available in many of the village shops.

In the winter, explore a vast winter wonderland on cross-country skis or snow-mobiles. Ice skate on the village rink, or ski at Ski Cloudcroft.

# Mountain Attractions

Popular summer activities in the Ruidoso area include golf, horse racing, hiking and biking. In the Lincoln National Forest, fishing, camping and RVing are popular activities. Nearby, at the **Inn of the Mountain Gods Resort**, this newly renovated 5-star hotel offers a championship golf course and the popular Casino Apache with blackjack, craps, roulette, video terminals and slots. More information is available at [www.ruidoso.net](http://www.ruidoso.net).

## Ski Apache

Ski Apache is New Mexico's premier ski and snowboard resort. Sierra Blanca – the area's 12,000 foot peak is Ski Apache's centerpiece. Fifty-five



trails, beginning at 11,400 feet, fan out for skiers and snowboarders of all levels with a fall line of over 1800 feet, makes skiing and snowboarding here a blast for everyone. Ski Apache is located just minutes from the beautiful mountain resort village of Ruidoso, New Mexico.

## Ruidoso Downs Race Track & Casino

Fast horses and hot slots are the name of the game at Ruidoso Downs Race Track and Casino. The first race at Ruidoso Downs Race Track was run in 1947, then in 1999, a new era of racing in New Mexico began with the legalization of slot machine casinos at race tracks. The Billy the Kid Casino opened in May of 1999 and houses over 300 slot machines. The casino is open daily and, in 2006, paid out over \$100 million in winnings. Racing in the mountains takes place annually from Memorial Day to Labor Day, culminating with the \$2 million All American Futurity.



*Bonita Lake, located near Ruidoso, New Mexico, is a couple hours away from the Buckhorn Ranch. The world-famous Inn of the Mountain Gods in Ruidoso is pictured below.*

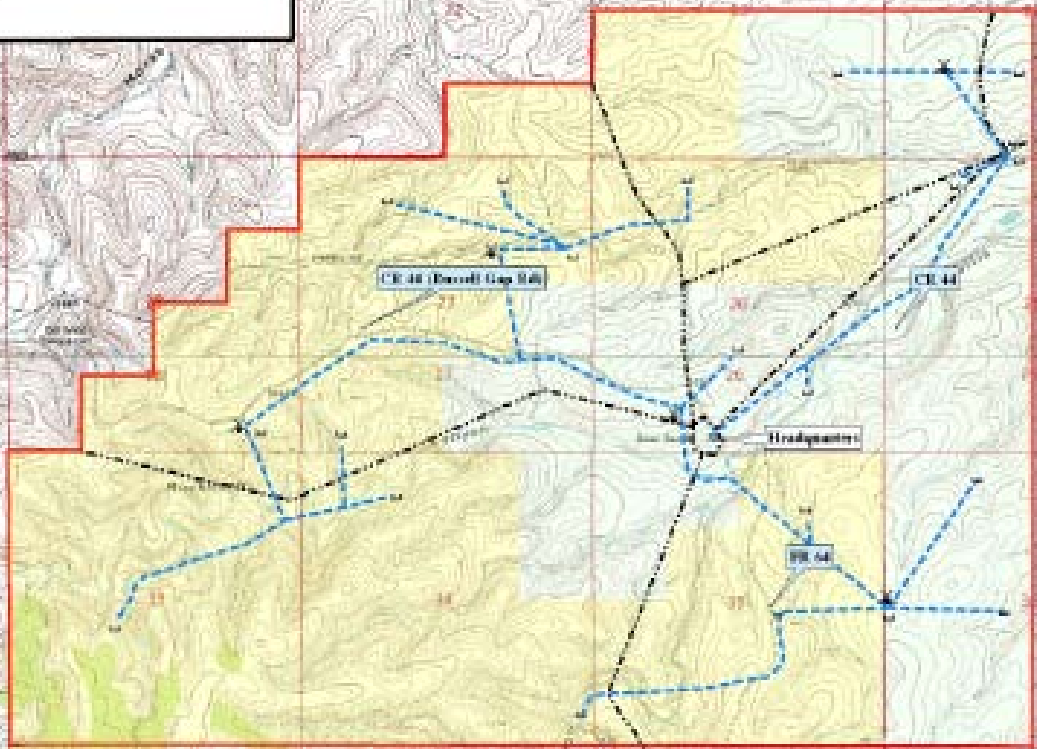






### Buckhorn Canyon Ranch

- RAM
- Drivethru
- Waterline
- Fence
- Ditch
- Well with storage





## **the Buckhorn Ranch**

**\$725,000**

**offered exclusively by Ranchline, Inc.**

**4,640 total acres (MOL)**

**1,600 deeded acres (MOL); 3,040 BLM acres (MOL);**





**Ranchline, Inc.**

**Paul Taylor, III**

**400 W. Second Roswell, NM 88201**

**1.866.323.3111 paul@ranchline.com**

**[www.ranchline.com](http://www.ranchline.com)**